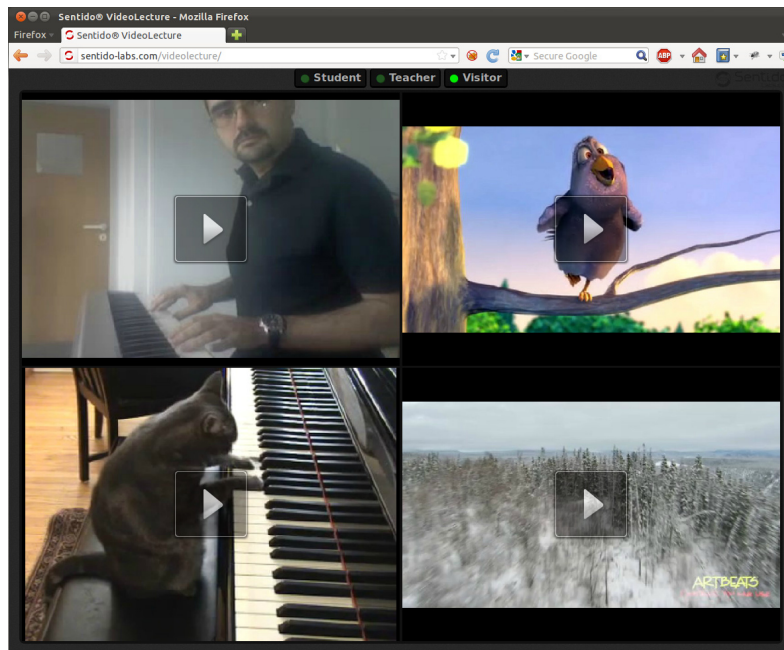


Sentido® VideoLecture Player Manual



Alberto González Palomo

alberto@sentido-labs.com

Date: 2012-02-27

©2012 Alberto González Palomo <http://sentido-labs.com>
“Big Buck Bunny” is ©2008 Blender Foundation <http://www.bigbuckbunny.org/>
“NORA: Practice Makes Purr-fect” is ©2007 Yow!/Alexander, Nora The Piano Cat, LLC
<http://norathepianocat.com/>
Flash[®] is a registered trademark of Adobe Systems Incorporated
Strobe Media Playback is covered under the BSD Licence. See file BSD-License.txt
OSMF and NetMocker are covered under version 1.1 of the MPL Licence. You may
obtain a copy of the License at <http://www.mozilla.org/MPL/>
The font used by the player, Playback Sans, is released under the SIL Open Font License
- see file PlaybackSansEULA.txt

1 Introduction

VideoLecture Player is a multi-stream web video player that uses either the Flash plug-in or HTML5 video.

1.1 User interface

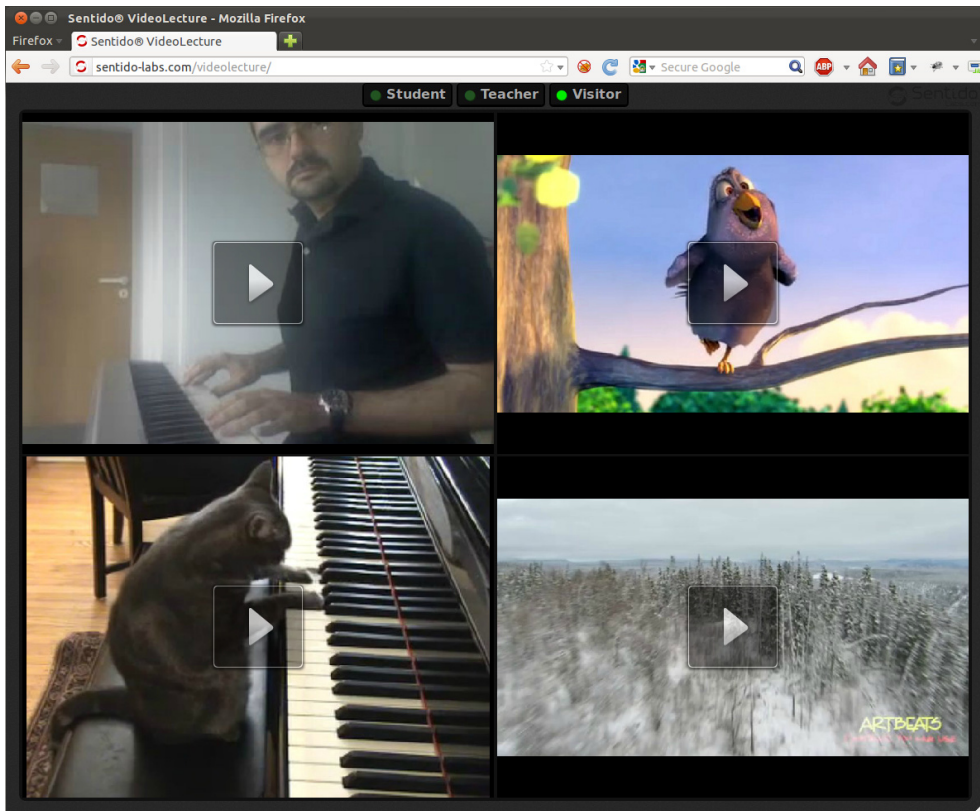


Figure 1.1: User interface

The user interface contains four video streams. The three buttons at the top select which streams will be displayed: the two streams for the student, the two for the teacher, or all of them for visitors.



Figure 1.2: This manual is available from the logo at the top right corner.

1.1. USER INTERFACE

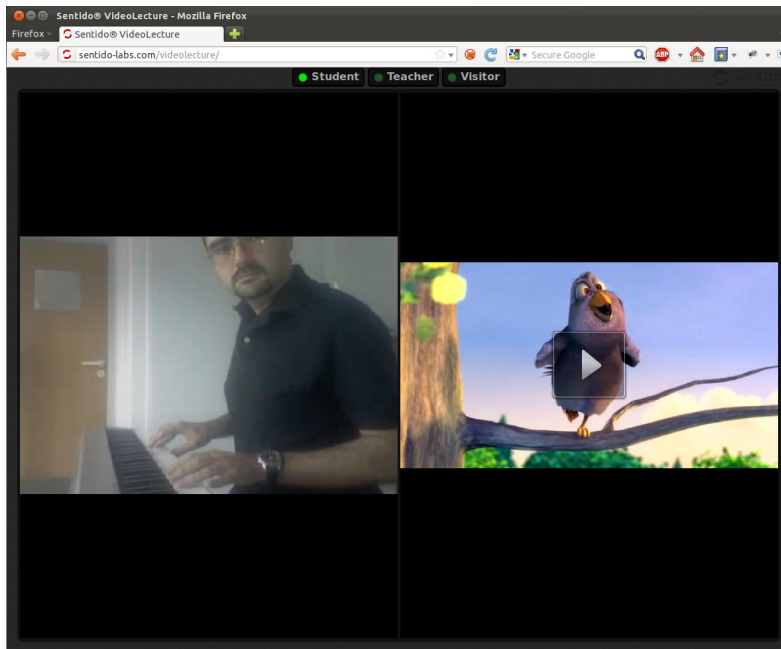


Figure 1.3: User interface, student view

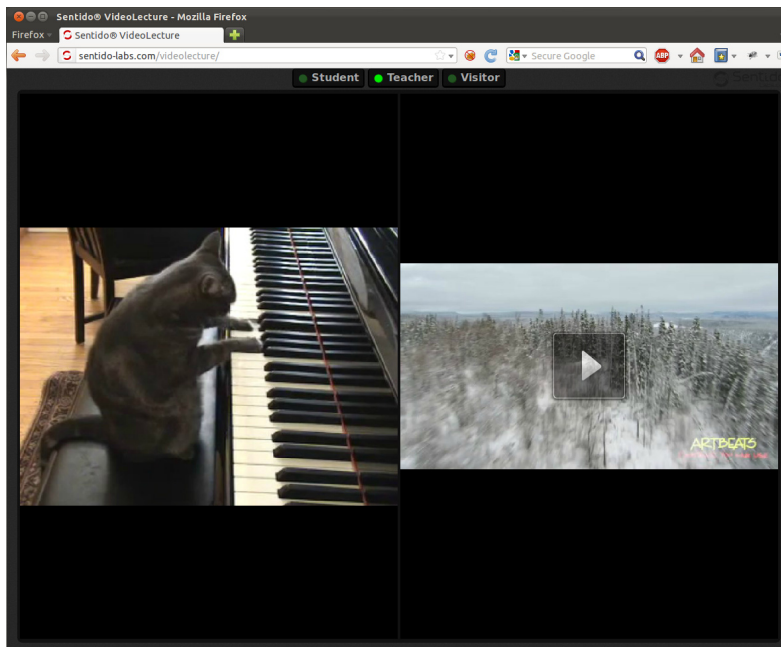


Figure 1.4: User interface, teacher view

2 Video player configuration

The file "conf.js" contains the player configuration, as properties of the conf object.

preferHTML5video

either **true** or **false**. If **true**, HTML5 video will be used in browsers that support it, even if the Flash plug-in is available. Otherwise, Flash will be used if possible.

The default value is **false**.

server

this is a hash table with the server descriptions. Each entry contains two fields:

protocol

protocol name, either "rtmp" or "http".

address

server address, including if needed the port number separated by a colon.

stream

another hash table with the stream descriptions. Each entry contains four fields:

server

a server object as defined above.

source

the source identifier, which in HTTP is the resource path.

live

either **true** or **false**. If **true**, the buffer settings are adjusted for live streams to have little latency at the expense of playback smoothness.

The default value is **false**.

poster

poster image to show when the video is not playing.

The default is black background without any image.

2.1 Example configuration file

Figure 2.1: Configuration for streaming from localhost

```
var conf = {
  preferHTML5video: false,

  server: {
    RTMP: { protocol: "rtmp", address: "localhost" },
    HTTP: { protocol: "http", address: "localhost:8134" },
    EDGESUITE: { protocol: "http", address: "players.edgesuite.net" }
  }
}

conf.stream = {
  studentLeft: {
    server: conf.server.RTMP,
    source: "/live/cameraFeed",
    live: true,
    poster: "images/poster-studentLeft.jpg"
  },
  studentRight: {
    server: conf.server.EDGESUITE,
    source: "/videos/big_buck_bunny/bbb_448x252.mp4",
    live: false,
    poster: "images/poster-studentRight.jpg"
  },
  teacherLeft: {
    server: conf.server.RTMP,
    source: "/vod/mp4:piano-nora.f4v",
    live: false,
    poster: "images/poster-teacherLeft.jpg"
  },
  teacherRight: {
    server: conf.server.HTTP,
    source: "/vod/sample2_1000kbps.f4v",
    live: false,
    poster: "images/poster-teacherRight.jpg"
  }
}
```

CHAPTER 2. VIDEO PLAYER CONFIGURATION

```
if (useHLS) {  
    conf.stream.teacherRight.source = "/hls-vod/sample2_1000kbps.f4v.m3u8" ;  
}
```

The example configuration file reads the variable `useHLS` to switch to an alternate stream if the browser requires HLS instead of RTMP, for instance in the Safari browser.

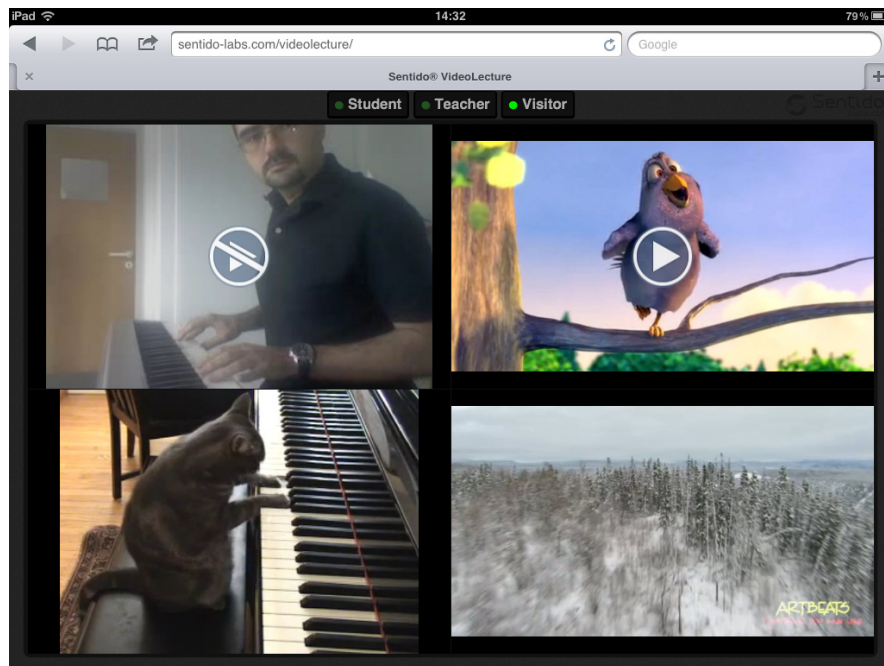


Figure 2.2: Video in the iPad: the top left video is a live stream encoded with Flash Media Server without H.264+AAC codecs, so the stream is not playable in this case.

3 Flash Media Server configuration

The configuration interface for FMS is available on port 8134 in the server where it was installed. For localhost the URL is <http://localhost:8134/>

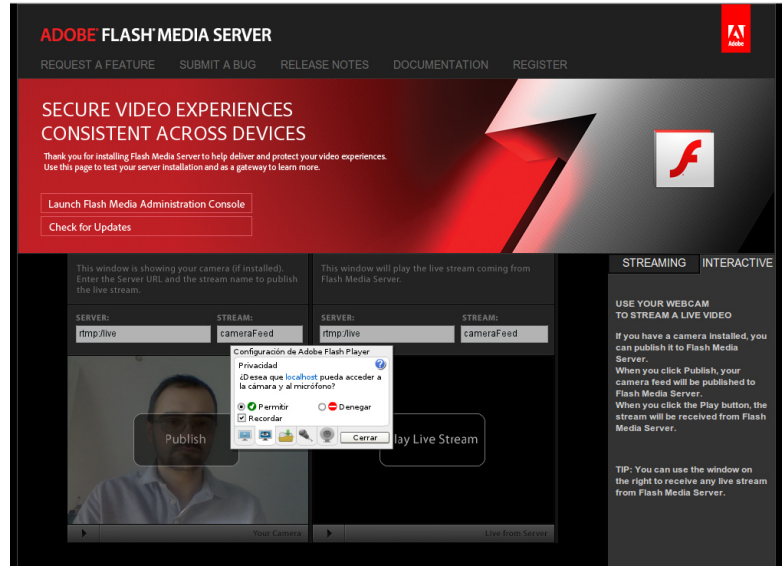


Figure 3.1: Access by the Flash plug-in to the camera must be enabled.

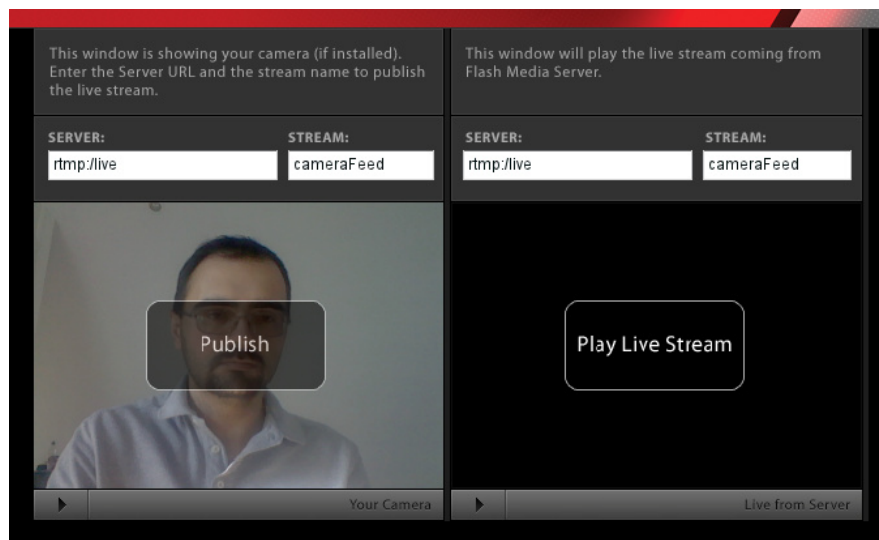


Figure 3.2: The stream name given here is the one used in the configuration file as `"/live/cameraFeed"`. Click "Publish" to start streaming.